

## Application Instructions for (compressed) Compriband

**Compriband-P/-P600** according to DIN 18542 BG1

**Compriband-A/-A600** according to DIN 18542 BG1

**Compriband-S** according to DIN 18542 BG2

**Compriband-B300**

**Compriband-N** impregnated with bitumen

**Compriband-Kombi**

## Installation

### Tools

A tape measure, flat bladed tool, shear cutters / scissors and if necessary wooden wedges required.

### Surface Treatment

Dust, oil, grease, old sealant residues, and loose particles to be removed.

### Tape Selection

The joint flanks must run in parallel. Measure the width of the joint, add tolerances of the joint and choose the relevant tape dimension according to the relevant data sheet (if the range of the joint is high, different tape dimensions are to be used). The tape should be recessed in the joint by at least 2 mm from any radius or edge.

### Preparation

An additional 1cm per meter should be allowed when cutting the tape length. Cut off the over compressed section of the tape at the beginning and the end of the roll. Take care that the cut surface is not concave. Remove the cover of the self-adhesive film and stick the pre-compressed tape into the joint. At vertical joints start at the bottom and then continue upwards. Press the adhesive side (possibly with a spatula) firmly against the joint edges. It should be ensured that the tape is not elongated, since the tape will move back to the original length.

### Expansion Behavior

Only the delayed expansion allows insertion into expansion joints etc.. The expansion behavior of the tape depends on the joint and ambient temperature. At higher temperatures, the material expands relatively quickly (the tape must be installed quickly). Therefore storage above 25°C should be avoided for a longer period (the tape must not be stored directly in the sun).

At lower temperatures, we recommend to store the material at least 24 hours prior to use at room temperature of about 20°C. The expansion of the tapes can be accelerated by heating with a heat gun.

### Joints of Tape

The individual tape lengths may be extended in the joint, where one will be compressed against the other.

### Application at Cross- and T-Joints

Start application at the bottom and continue upwards. Then insert the tapes in the horizontal joints and abut the strip against the vertical joints. The strip must not be lengthened!

### Windows

Kindly note to add at least 1 cm per meter tape especially for sealing windows. Again, the tape is to be compressed at the 4 corners. The tape must not be installed in one piece around the frame.

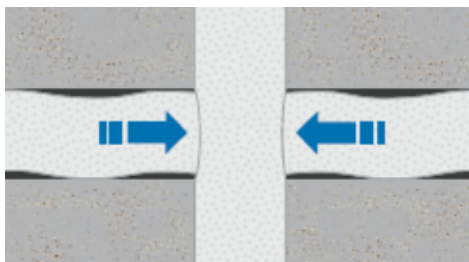
### Further Notices

In wet or dusty joints the self-adhesive (mounting aid) can be replaced by wedges. Remove the wedges carefully after the tape expansion. The tape must be laid offset from the joints leading edge inwards 2 mm for safety reasons. In order to guarantee the desired sealing, the joint widths, mentioned in the data sheet, must not be exceeded.

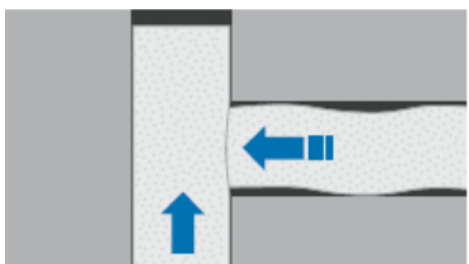
With narrow joints: Moisten the tape with water for easier positioning.

After expansion of the tape, the sealing effect will be set up within a few days, as the tape needs time to thoroughly close with the joint edges!

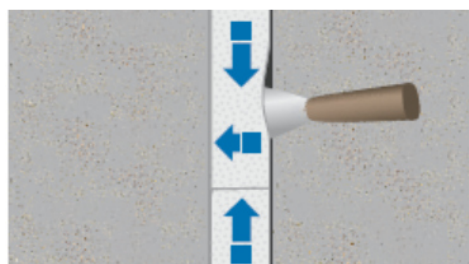
## Installation instructions for of Compriband Masonry and Windows



For cross and T-joints it is recommended to push the tape of the horizontal joint butt against the tape of the vertical joint. Make sure the strips do not lengthen, but abut.



Note especially for the window assembly when cutting of the tape: the addition of at least 1 cm per meter of joint length.

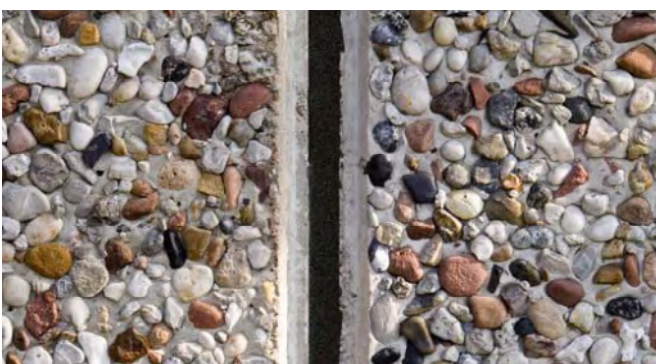


At vertical joints start at the bottom and continue working upwards. Press the adhesive side (possibly with a spatula) firmly against the joint edges. The joints of abutted tapes must be compressed against each other, but take care not to stretch the tape.



Due to security reasons the tape should be recessed in the joint by at least 2 mm from any radius or edge. The tape must not line up precisely with the edges of the joints!

The expansion behavior of the tape depends on the joint and ambient temperature.



All data are laboratory values, which may differ in practice and therefore are not guarantees of a particular property. The variety of details and combinations may not be dealt with in this leaflet. The user is responsible to inform himself accordingly. A specific result cannot be guaranteed due to the unmanageability of the processing conditions. Own tests to ensure the desired results are expressly advised. Previous editions are no longer valid. Delivery is solely subject to our General Delivery and Payment Conditions. We reserve the right to alter product specifications to technical progress or new developments (20/01/2015).